

Installation Guide

Required Tools

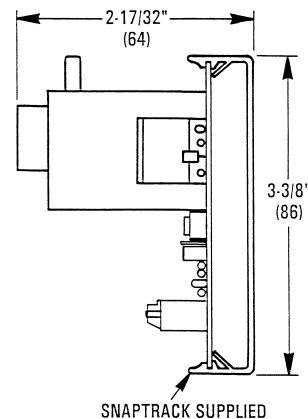
- digital voltmeter
- small phillips & flat screwdriver

Mounting

A clean, dry, oil-free main air supply is required for proper operation. An internal, non-replaceable filter is used. If air supply contaminations is suspected, use an external HFO-0006 in-line filter.

The XEC-3001 may be mounted in any position.

1. Carefully remove the circuit board from the snaptrack.
2. Mount the track in the desired location.
3. Replace board in track. Do not slide or flex the circuit board while replacing.

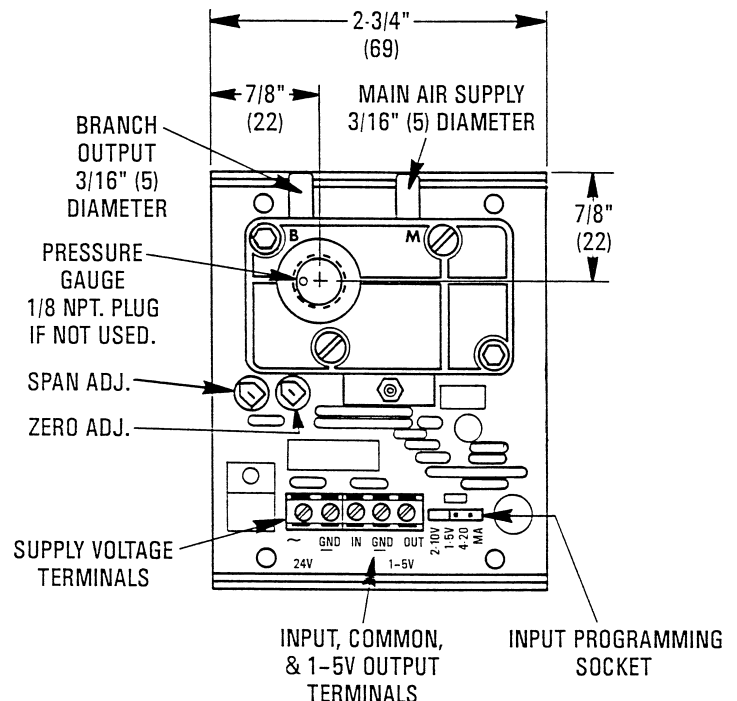


Wiring

1. Connect power supply.
 - a.) 24 VDC (22 VDC min./ 40 VDC max.):
 - Positive to “~” (phase).
 - Negative to “GND”.
 - b.) 24 VAC:
 - Transformer secondary leg to ‘~’ (phase).
 - Other leg to “GND”.

NOTE: Any device connected to this transformer must use the same common. If you are not sure of the other device’s polarity use a separate transformer. If the shared device is a coil, use a spike snubbing device across the coil to prevent possible malfunctions.

2. Position Input Program Jumper to 1-5 VDC, 2-10 VDC or 4-10 mA.
3. Connect the input signal wiring, positive to “IN” and negative to “GND”
4. Connect the output feedback signal (if required), positive to “OUT 1-5” and negative to “GND”.



Connections

The gauge port will accept a 1/8" male NPT pressure gauge. This allows direct reading of the pressure output. This port must be plugged if a pressure gauge is not required.

1. Connect the 20 psig main air to the "M".
2. Connect "B" port to the controlled device (damper or valve actuator).

Adjustments

The "Span and "Zero" adjustments are factory set.

Should calibrations be need calibrate as follows:

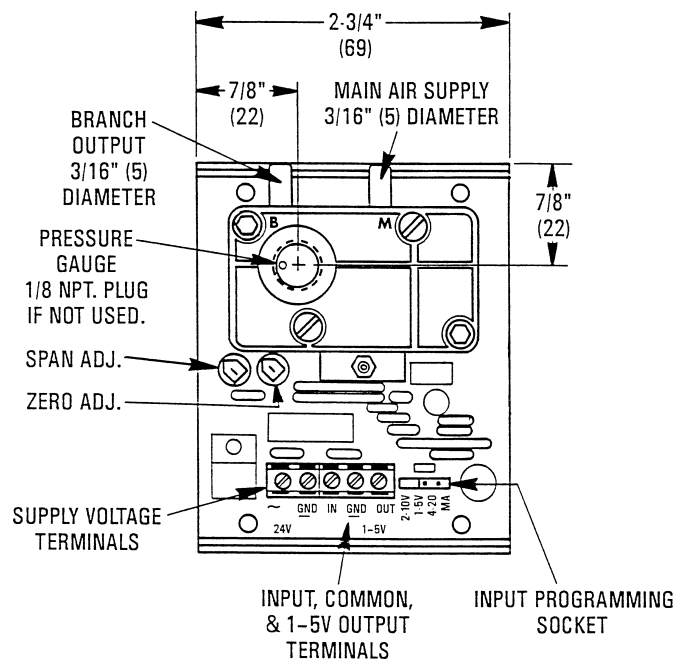
1. Disconnect main air.
2. Adjust "ZERO" potentiometer to 0.1 VDC feedback output.
3. Reconnect main air.
4. Apply an input voltage of 5.1 or 10.2 VDC, or input current of 20.4 mA.
5. Adjust "SPAN" potentiometer for 15 psig branch output pressure.
6. Apply an input voltage of 3-6 VDC, or input current of 12 mA.
7. Readjust "ZERO" potentiometer for 9 psig.

Manual Override (XEC-3004 Only):

1. Move "MAN/AUTO" jumper from "AUTO" to "MAN".
2. Adjust potentiometer for desired output by observing gauge or the 1-5 VDC output signal.

Maintenance

No routine maintenance is required. Each component is designed for dependable, long term reliability and performance. Careful installation will also ensure long term reliability and performance.



KMC Controls

P.O. Box 497

19476 Industrial Drive

New Paris, IN 46553

U.S.A.

TEL: 574.831.5250

FAX: 574.831.5252

E-mail: info@kmcccontrols.com